

vibes



Modular Lighting Instruments, Belgium

trendreport 2.2017

flow

Mind, body and soul...

4

crafttech

Retro craftsmanship

6

heritage

The art of living

8

superstruct

Soft industrialism

10

designer vibes

New designer vibes from
Belgium and Italy

12

introduction

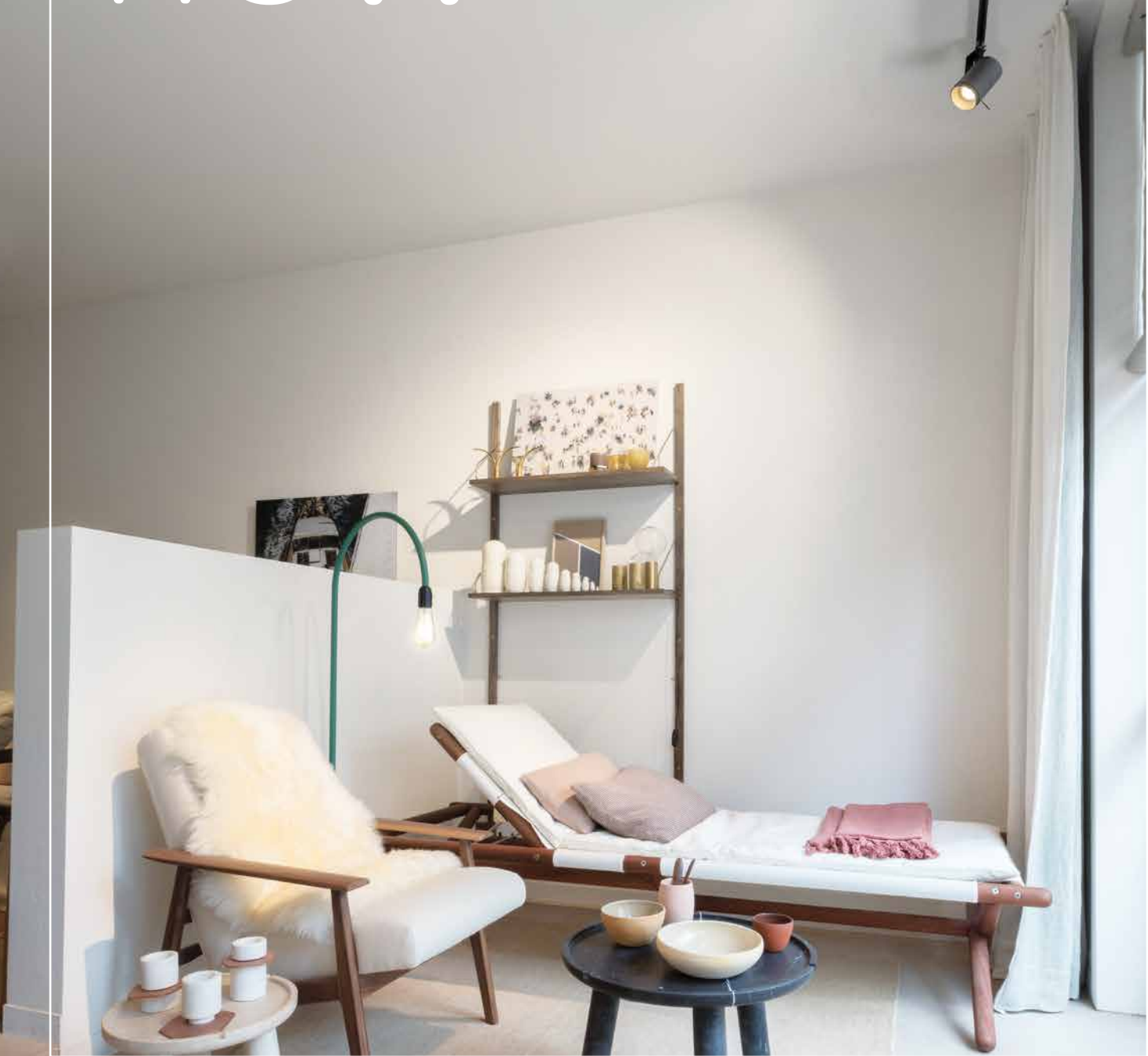
Most of 2017 has passed and many interesting events have happened. We introduced our Iconical colours at the Palazzo Litta in Milan in April, where our architectural installation was the center of attention in the Clock Courtyard. Whilst presenting 40 new colours in a super durable quality, we welcomed and inspired many architects and designers. In this second vibes edition of 2017 we aim to inspire your collections for 2018 based on the latest trend forecasts with colour selection in our quality range of powder coatings.



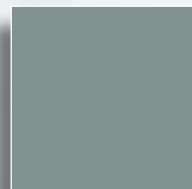
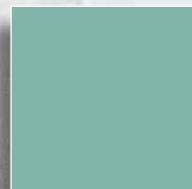
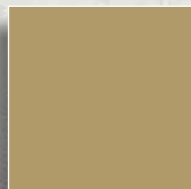
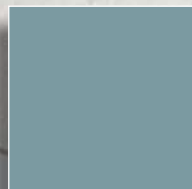
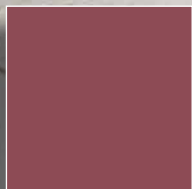
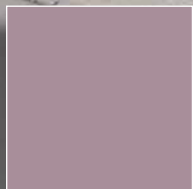


Order your vibes 2.2017 fan deck via
<http://www.axaltacolourit.com/vibes201702.php>

flow



Modular Lighting Instruments, Belgium



Mind, body and soul form the root of our housing. A better you is the new black...

in architecture

As we seek inspiration in archeology, columns become part of today's design. Cubes, cylinders and orbs contribute to the serenity of our homes.

in design

Muscle tone and body flow is the key inspiration for design with mint green, soft blue and warm gold as main shades.



BD Barcelona Design, Spain

SILVER DREAM
Matt Smooth Metallic
SD301C7036020

RED VIOLET
Matt Smooth
AE30013400220

ANODIC SAPPHIRE
Matt Smooth Metallic
AE20105000520

ANODIC GOLD
Matt Smooth Metallic
AE20111000820

EMERALD 3
Fine Textured Metallic
AE03216116920

VERDIGRIS
Fine Textured
S0031C6027020



Piet Boon, The Netherlands



Piet Boon, The Netherlands



Unopiù, Italy

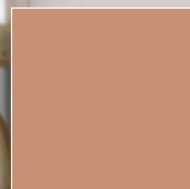
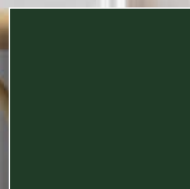
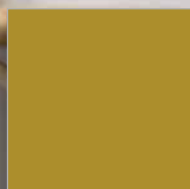
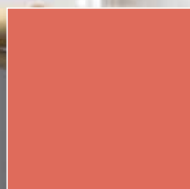
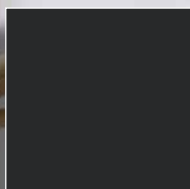
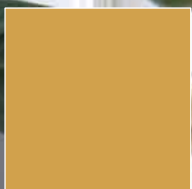


Unopiù, Italy

crafttech



Beaverhausen, Belgium



SUNNY GOLD
Matt Smooth Metallic
SD301C1032020

ELOXAL 35 BLACK
Matt Smooth Metallic
SD20104000720

SALMON PINK
Matt Smooth
AE300C3302220

CURRY
Semi-Gloss Smooth
AE70011950325

BOTTLE GREEN
Fine Textured
AE03056600720

BEIGE RED
Matt Smooth
AE03053301220



BD Barcelona Design, Spain

**It's all about the retro craftsmanship
that now goes hand in hand with
technology...**

in architecture

Modern technology embraces science, staying in touch with past times and with a clear focus to create ultimate luxury. Warm, natural materials are accented with a strong black.

in design

Deep and rich retro-art take hand craftsmanship to a modern level. Young designers work with warm luxurious colours give an exclusive identity to their limited editions.

Modular Lighting Instruments, Belgium



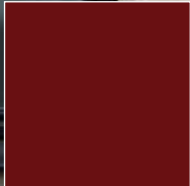
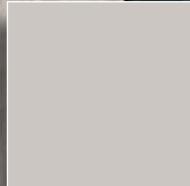
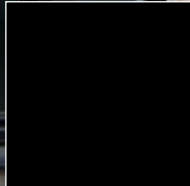
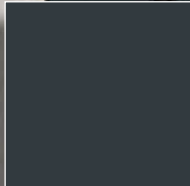
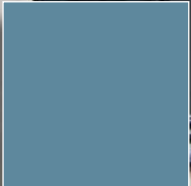
Isati Creative Studio, Belgium



Indera, Belgium



hermitage



Maankwartier Noord, The Netherlands - Reynaers Aluminium - Wauber Architects - Photographer Marcel van Hoof (Weller)

The art of living is defined by purism
and discipline, where less is less...



Extremis, Belgium

in architecture

It's all about functional beauty and essence. Discipline is reflected in simple yet repetitive patterns both inside and outside of buildings.

in design

Rituals are key, and interiors are influenced with Japanese perfection. Soft grey beige, deep indigo blue shades with a hint of imperial red give colour to a functional luxury.



Modular Lighting Instruments, Belgium



XLBOOM, Belgium

Zuidzicht, Belgium
BA2i Human Centered Architecture



PURPLE RED Easy Textured
SD130C3300420

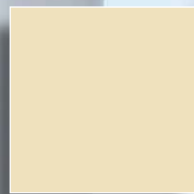
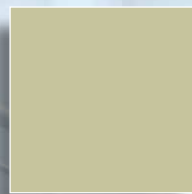
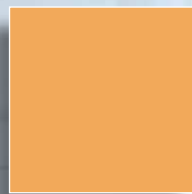
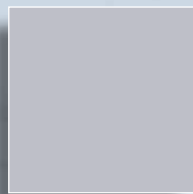
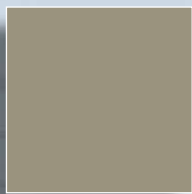
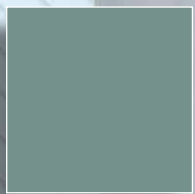
ELOXAL NATURA Matt Smooth Metallic
SD201C7333721

BLACK 2100 Fine Textured Metallic
AE03204126121

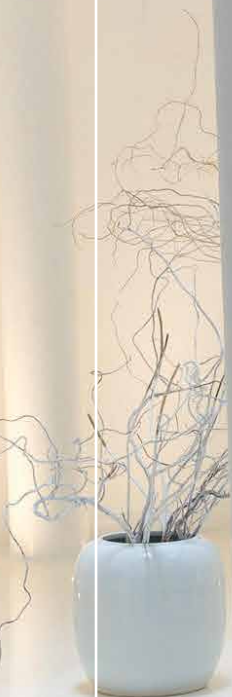
BLACK BLUE Matt Smooth
AE30015500420

AZURITE 3 Fine Textured Metallic
AE03215114020

SQUIRREL GREY Fine Textured
AE03057700020



superstruct



We're on a quest for new materials
with clear features, texture and
tactility in environmentally friendly
materials...



Indera, Belgium



Wakefield Archive Center, UK
Broadway Malvan Architects



Bert Masselus for MASS-A, Belgium



in architecture

Soft industrialism starts a revival. The construction of buildings is revealed, concrete and oxidized metals are combined with a variety of materials.

in design

Textures are made visual and daring shapes come to life. Grizzled pastels accented with a hint of orange in a new wave of materials.

- ANODIC MALACHITE
Mat Smooth Metallic
AE20106000620
- STABLE BL967
Fine Textured, SpeedRed metallic
AG03441031221
- ELOXAL 31 STAINLESS-STEEL
Mat Smooth Metallic
SD201C7231121
- PASTEL YELLOW
Mat Smooth
AE300111033420
- ANODIC CHAMPAGNE
Mat Smooth Metallic
AE20101002220
- LIGHT IVORY
Easy Textured
SD130C1101520





Axel Enthoven

Yoso is the latest collection by Axel Enthoven for XLBoom

“Our collaboration with Enthoven led to a signature XLBoom series for our new collection 2017, named Yoso. Yoso means ‘element’ in Japanese. It refers to the pure and functional design of a series. By changing dimensions, each design will produce a new practical element. Yoso is a small or medium table, a desk or a wall rack. The powder coated steel frame comes in Black or warm Quartz enabling indoor and outdoor use. The timeless design is referred to by Enthoven as of eternal value and self-evident.

The colour selection for the Yoso collection was done in collaboration with the colour experts from Axalta Coating Systems in the Colour Experience Room in Belgium. We have chosen Axalta Powder Coatings for the frames, because we, at XLBoom, keep focus on creating and producing sustainable objects for indoors and outdoors.”

Ann De Cock, XLBoom



designer



ZigZag by Beatriz Sempere for Italcomma

Beatriz Sempere was born in Alicante in Spain in 1975 and she studied as industrial designer in Valencia. Today she co-operates with well-known designers in different companies.

ZigZag shelves show a continuous line of steel, designed for the comfort of the book that, with a sinuous movement, makes us part of its trajectory. It transmits us an emotion that has been converted into the soul of the object. The ZigZag design has been selected as one of the best projects for the "20 YEARS SALONE SATELLITE / PLANETS AND STARS OF NEW CREATIVITY" held in Milan at the Fabbrica del Vapore from April 4th 2017

Clip

Two essential signs that shape two elements. A slim line which supports a top creating a small working corner for you. Thanks to the simplicity of its design, Clip fits into any space and any situation.

vibes...

designer vibes...



Virus by Dirk Wynants for Extremis

"Create nothing unless it is both necessary and functional. And if this is the case, do not hesitate to make it beautiful." This principle always adhered to by the Shaker communities perfectly sums up what Extremis does. Extremis does not aspire to simply offer beautiful outdoor furniture to the market. Extremis makes "tools" that make life better. More pleasant. These tools must always be functional. And above all always better than the products already available. In Extremis' designs every single aspect is the fruit of careful consideration. And each design is always a feast for the eye. The latest design, Virus, was presented at this year's edition of the Salone del Mobile in Milan.

Virus is a picnic table that comes in various guises. Dirk Wynants has designed different versions of this garden picnic table based on an identical seating frame for two to five people. This is a fun way of filling a space with a mixture of small to medium-sized seating sets without losing uniformity. Furthermore, the compact design responds to the trend for smaller living spaces and offers a solution that enables you to use our tools on balconies and in urban gardens. There is a Virus picnic table that is ideal for any kind of gathering. Expect nothing less than togetherness everywhere!

Dirk Wynants



When design is art and color. Alessandro Guerriero for Officine Tamborrino

Officine Tamborrino's styles come from a research on materials circling around steel applications in interior design and on extrinsic properties of solidity, stability and lightness.

In addition to technological research, the design brand based in Ostuni, builds the identity of its collection through dialogue and confrontation with creative, intellectual and designers with strong identities. One of them is the master of design Alessandro Guerriero, an internationally renowned artist, founder of Atelier Alchimia and on behalf of Officine Tamborrino, author of the impressive O Design Collection, entirely developed on the circular pattern and on the dialectical game of colours.

The collection signed by Alessandro Guerriero takes birth from the same shape and material - steel - each object develops its own identity linked to its innovative function and its rethinking of shapes and architectural spaces.

Thanks to this project, Officine Tamborrino reinterprets the objects and reconsiders the intrinsic function: the circle softens the living space and suggests an unprecedented movement, increasing the sense of lightness.

For this reason, Axalta powder coatings have been selected to better interpret the chromatic schemes and simultaneously the functional requirements of Alessandro Guerriero's collection. Together with the creative director of Officine Tamborrino, Licio Tamborrino, textured finishes have been selected from the Fine Textured Collection emphasizing the material aspects, whilst the matt finishes of the Matt Collection in pastel colours recall the past but also make these design objects very contemporary. In fact, all finishes chosen for this collection are specifically developed for interior design.

The main character of the collection is in fact the colour expressed through brave contrasts, typical of the work of the maestro Guerriero, and through a palette that directly addresses the imagination of

contemporary art. For instance, Chaos goes beyond the concept of bookcase and

dwells as a real sculpture or a steel carpet Ocean looks like a kaleidoscopic mosaic, infusing the design of the strength and freedom typical of visual arts.

Alessandro Guerriero states, "This particular territory is inhabited by pure art and functional design".



Alessandro Guerriero



COLOUR it. with spirit

The team at Axalta Coating Systems have developed a digital tool that simplifies the colour selection process in architecture and design through a virtual surface coating. The entire spectrum of colours, in various gloss levels and textures, may be visualised. The application also shows a large number of Axalta developed colour shades and effects, many of which have been developed in conjunction with architects. The colour range available in the tool is regularly expanded and updated by our specialists. To ensure that colour shades, gloss levels and textures are also convincing in reality, we have integrated an innovative colour sample service, which enables you to receive your selected colour samples completely free by mail on request. Make a colour selection for your next project now!

www.axaltacolourit.com



Order your vibes 2.2017 fan deck via

<http://www.axaltacolourit.com/vibes201702.php>

Austria, Greece, Central Europe

Tel: +43 22 36 50 00
powder-austria@axaltacs.com

Norway

Tel: +47 22 08 79 00
powder.norway@axaltacs.com

Belgium, Luxembourg

Tel: +32 13 53 90 90
powdercoating@axaltacs.com

Poland

Tel: +48 42 677 16 70
powder.poland@axaltacs.com

France, Middle East, Africa

Tel: +33 4 77 96 70 00
alesta-info@axaltacs.com

Sweden, Denmark, Finland

Tel: +46 49 06 62 00
powder.sweden@axaltacs.com

Germany

Tel: +49 87 03 93 18 10 63
contact-cs@axaltacs.com

United Kingdom, Ireland

Tel: +44 13 25 34 70 00
powdersales@axaltacs.com

Italy

Tel: +39 0 29 59 19 61
powdercoatings.italia@axaltacs.com

Turkey

Tel: +90 26 26 74 00 00
powder.turkey@axaltacs.com

Spain, Portugal

Tel: +34 9 36 10 60 20 / 23
alesta.barcelona@axaltacs.com



www.powder.axaltacs.com