

Agriculture, Construction & Earthmoving Equipment

Color Reference Guide



Powder Coatings

Alesta powder coatings deliver superior coverage and transfer efficiency so you can get more done in less time. But higher yields are just the beginning. Available in a variety of technologies for a broad range of applications, Alesta powder coatings are easy to use and deliver superior coverage and transfer efficiency. With virtually no VOCs, no hazardous waste, and up to 98% product utilization, our powder coatings are the environmentally responsible choice.

Highlights

- » Excellent chemical resistance
- » Corrosion resistance
- » Mechanical toughness that can be formulated to meet individual performance specifications and gain commercial approval
- » Superior edge coverage and optimum film build, with no primer required



Alesta Colors



AGRICULTURE GREEN
PFG678S9



AGRICULTURE YELLOW
PFY676S9



BRIGHT YELLOW II
PFY686S9



CNH DARK GRAY II
PFH803S9



AGRICULTURE RED
PFR662S9



BRIGHT BLUE
PFK633S9



HIGH GLOSS CAT
YELLOW III
PFY696S9



HIGH GLOSS CAT
YELLOW II
PFY627S9



BRIGHT BEIGE HP
HFT600S4



MOJAVE BROWN HP
HFJ600S4



MEDIUM GLOSS CAT BLACK
PFB611S6



HIGH GLOSS CAT BLACK
PFB610S9



GRAY CAT II
PFH674S4



SATIN DARK GRAY CAT II
HFH603S4



CONSTRUCTION GRAY
PFH771S9



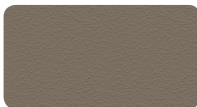
CONSTRUCTION YELLOW
PFY675S9



CNH DARK GRAY II
PFH803S9



CNH CE GRAY II
PFH804S9



CNH WHEAT TAN
UFTF02S0



CNH BLACK II
PFB712S4



CNH POWER TAN II
PFT671S9



TRACTOR ORANGE
PFS615S9

Primer Colors



PRIMER ACE BLACK 31
RFB650S5



PRIMER ACE BLACK 32
RFB651S5

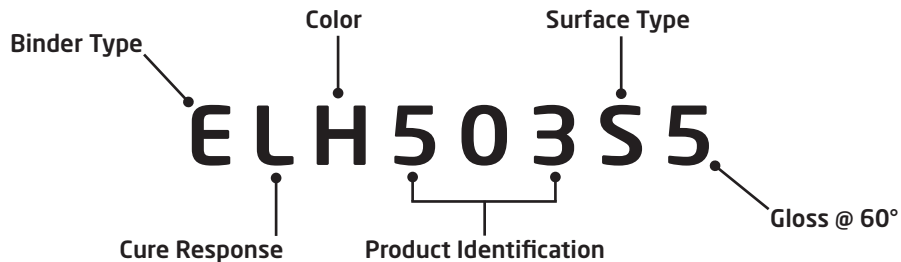
Specialty Products



HT ACE BLACK
SSB615H1

The colors in this brochure are indicative only

Powder Product Coding System



Binder Types:

E Epoxy	U Aliphatic-Urethane (called Urethane)	H Non-TGIC Polyester, HAA Curative
R Epoxy-Polyester Hybrid	P TGIC-Polyester	C Polyester Acrylic
G Polyester, TMMGU Glycouril Curative	S Siloxane or Silicone Polyester	

	Epoxy	Hybrid	Aliphatic Urethane	TGIC Polyester	Wrinkles	HAA Polyester (TGIC-Free)
Hardness	●●●●●	●●●●●	●●●●	●●●●●	●●●●●	●●●●●
Flexibility	●●●●●	●●●●●	●●●●●	●●●●●	●●●●●	●●●●●
Overbake Stability	●●	●●●●●	●●●●●	●●●●●	●●●●	●●●●●
UV Resistance	●	●	●●●●●	●●●●●	●●●●●	●●●●●
Corrosion Protection	●●●●●	●●●●●	●●●●	●●●●●	●●●●	●●●●●
Chemical / Solvent Resistance	●●●●●	●●●●	●●●●	●●●●●	●●●●	●●●●●
Ease of Application	●●●●●	●●●●●	●●●●●	●●●●●	●●●●●	●●●●●

This table shows the difference among binder types in the various performance characteristics.

● Not Recommended ●● Fair ●●● Good ●●●● Very Good ●●●●● Excellent

Cure Response:

F = Fast cure. Generally 10 minutes @ 400°F or 10-20 minutes depending on chemistry is sufficient to cure 20-gauge metal and lighter. Low gloss products may require a slightly longer cure

L = Low cure. Generally, 10 minutes @ 325°F is sufficient to cure EL and RL products on 20-gauge metal and lighter. For PL and UL products, 15-20 minutes @ 350°F is sufficient for cure

S = Slow cure. Generally 10-15 minutes @ 450°F or higher is sufficient to cure 20-gauge metal or lighter

Heavier substrates require more time and/or higher temperatures. Properties summarized are typical. Refer to individual product technical data sheet for specific cure information

Color:

A Aluminum or Silver	J Brown or Bronze	S Orange
B Black	K Blue	T Tan or Beige
C Clear	L Ivory or Cream	W White
D Gold, Brass or Copper	M Maroon	Y Yellow
G Green	P Pink or Purple	
H Gray	R Red	

Numbers:

The numbers are sequential to provide a unique identification for each product.

Surface Type:

S Smooth	P Protective (Functional)
M Metallic or Metallic Effect Smooth	R River or Ridge Texture
T Fine-Textured	A Antique-Textured Metallic Vein
H Heat Resistant	W Wrinkle
G Grain-Textured	B Bonded

Gloss at 60°

0 0 to 9	4 40 to 49	8 80 to 89
1 10 to 19	5 50 to 59	9 90 and above
2 20 to 29	6 60 to 69	
3 30 to 39	7 70 to 79	



Liquid Coatings

Tufcote and Tufcote Plus can improve overall yield and cost position by eliminating process steps, cutting energy consumption and reducing material waste. Tufcote and Tufcote Plus primers and sealers deliver superior appearance and holdout, and excellent corrosion protection at low film builds. Tufcote and Tufcoat Plus topcoats provide excellent weathering, flexibility, and color and gloss retention with less chalking. The topcoats can be air-dried or force dried for even faster cure times.

Tufcote 2K 1826-XXXXX

Tufcote 2K Plus 1827-XXXXX

Highlights

- » Excellent hiding properties and shorter cycle time
- » Superior holdout under extreme conditions
- » Excellent gloss, color retention and impact resistance
- » Improved edge protection
- » Available in low, medium, and high gloss levels (high gloss at 85+)

Tufcote 2K Colors



WHITE
1826-36126



DOZER YELLOW
1826-39215



CLAY
1826-39288



AGRICULTURE RED
1826-50155



TRACTOR BLUE
1826-50156



TRACTOR GREEN
1826-50157



BLACK
1826-50158

Tufcote 2K Plus Colors



RED
1827-17584



BLACK
1827-29275



CREAM
1827-31126



RED
1827-32923



AGRICULTURE RED
1827-33927



AGRICULTURE GREEN
1827-34921



RED
1827-35222



YELLOW
1827-35223



GRAY
1827-35224



YELLOW
1827-36132



ORANGE
1827-36133



GRAY
1827-39201



BRANDT BLUE
1827-39202



WHITE
1827-39203



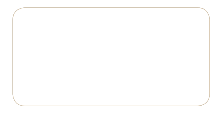
NH WHITE
1827-39213



ORANGE RAL 2010
1827-39214



ORANGE RAL 2009
1827-39289



YELLOW
1827-5011



NH BRIGHT YELLOW
1827-50554



POWER TAN
1827-50555



NH BLUE
1827-50553



CNH DARK GREY
1827-50556



CNH CE GREY
1827-50557

Our Tough Coatings Also Shine

Tough, durable and attractive finishes with superior coverage and efficiency that today's agricultural and construction equipment manufacturers need. High-performing, easy to use liquid and powder coatings that add value to manufacturing operations.

Designed to meet the stringent performance requirements of the major agriculture and construction equipment manufacturers, Alestia® powder coatings offer superior corrosion protection while maintaining the vibrant aesthetics of major OEM brands. Alestia powder coatings protect and beautify everything from crop harvesting machinery to bulldozers for construction sites.

Axalta Tufcote™ liquid coatings are formulated to meet the rigorous standards for performance, corrosion protection, gloss, and color retention set by leading manufacturers of agriculture and construction equipment. Designed to deliver consistent, high quality results with a very hard and durable finish for enhanced performance.

Commercial OEM Global Approvals

Axalta has earned numerous commercial OEM approvals from leading ACE industry manufacturers. Whether it's painting the entire combine or the parts supplied for an excavator, our products give you the consistent reliable performance that is specified by the OEM. With our wide range of global OEM approvals, Axalta delivers the quality and performance you can count on.





axalta.us/industrial

© 2017 Axalta Coating Systems, LLC and all affiliates. All rights reserved. E-R5663-1 (7/17)
* All products may not be available in all countries.

